

Shock-Crete™

Antimicrobial Urethane Cement Flooring Systems



Shock-Crete urethane cement systems provide superior protection in harsh environments.

- >

Complements floor cleaning and hygiene practices
- >

Excellent protection against Moisture Vapor Transmission (MVT)
- >

Thermal shock protection during high temperature wash cycles
- >

May be applied to green concrete
- >

Slip resistant
- >

High abrasion and chemical resistance
- >

Withstands high mechanical stress
- >

Extremely low VOC / low odor
- >

Suitable for use in USDA facilities
- >

Available in several configurations to meet a range of service requirements



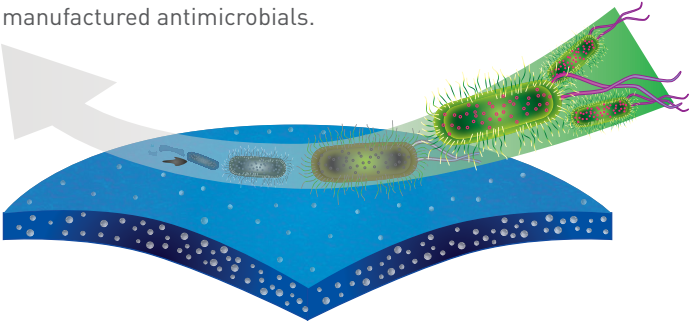
Recommended Areas for Use

	Shock-Crete HD	Shock-Crete HF	Shock-Crete SR	Shock-Crete SL2	Shock-Crete IF
Temperature Resistance (continuous)	400°F (204°C)	220°F (104°C)	200°F (93°C)	180°F (82°C)	220°F (104°C)
Dry Process (light to medium traffic)	✓	✓	✓	✓	
Dry Process (medium to heavy traffic)	✓	✓	✓		✓
Wet Process (light to medium traffic)	✓	✓	✓	✓	
Wet Process (medium to heavy traffic)	✓				✓
Industrial Kitchens / Wash Areas	✓	✓	✓	✓	
Packaging Areas	✓	✓		✓	
Chemical / Solvent Storage	✓	✓	✓	✓	
Loading Docks	✓	✓	✓		✓
Laboratories	✓	✓	✓	✓	
Cold Rooms / Freezers	✓	✓	✓		
Heavy Manufacturing / High Impact Areas	✓				✓

Shock-Crete contains Polygiene® silver ion technology

Shock-Crete, with Polygiene, has antimicrobial properties that protect it from degradation caused by microorganisms.

*Silver is a natural element known for its ability to purify and protect from bacterial infections – and provides an environmentally friendly alternative to chemically manufactured antimicrobials.



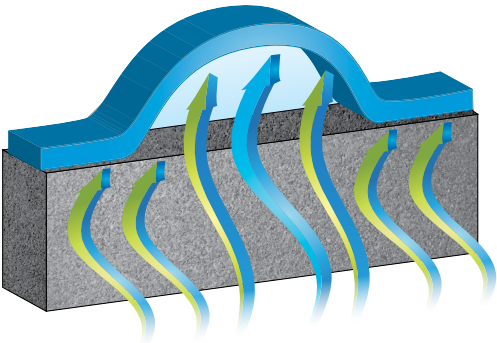
Performance Attributes

RESISTANT TO CHEMICAL ATTACK			
Hydrochloric Acid 10%	✓	Methanol	✓
Sulfuric Acid 10%	✓	Sugar Syrups	✓
Citric Acid 10%	✓	Caustic Soda	✓
Acetic Acid 5%	✓	Petrol	✓
Lactic Acid 10%	✓	Oil Ingredients	✓
Phosphoric Acid 5%	✓	Detergents	✓

Moisture Vapor Barrier

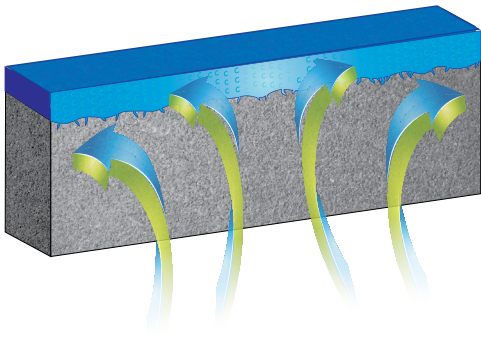
Conventional Floor Coating

A conventional floor coating will blister due to moisture vapor lifting the coating from the surface.

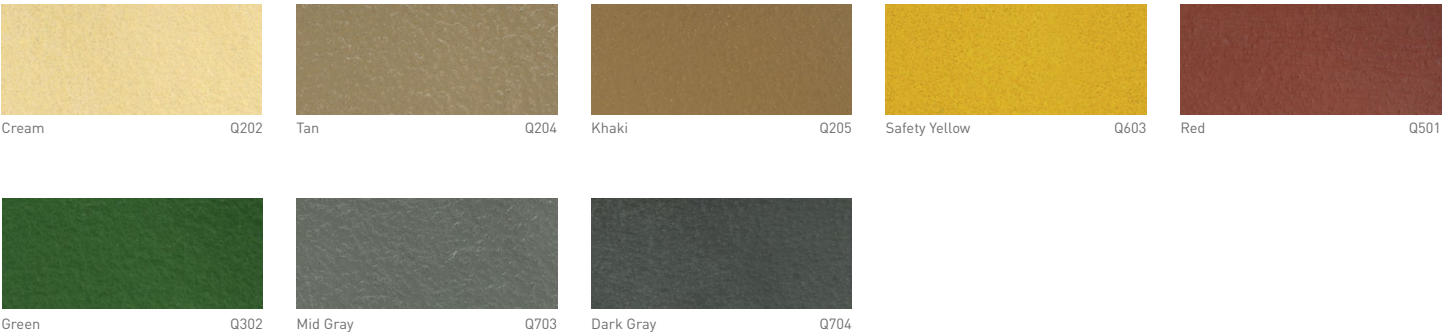


Shock-Crete Flooring Systems

Shock-Crete diverts the moisture vapor through a defined pore matrix keeping the coating intact and the floor protected.



Shock-Crete: Pigment Packs



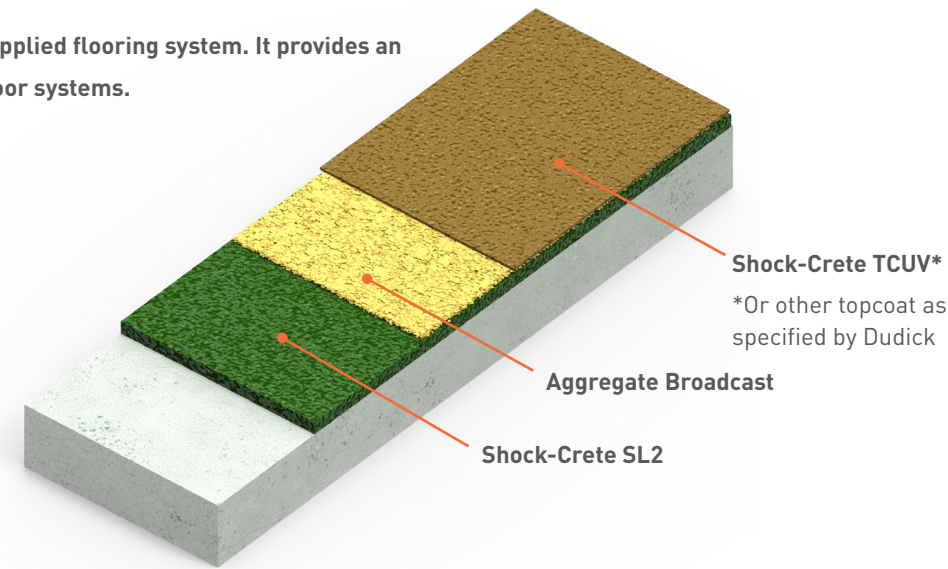
*Sold in powder form, to be used exclusively with Shock-Crete Urethane Cements

Colors shown are ink representation of actual colors. Actual product appearance may vary due to product, gloss, surface texture or method of application. Contact Dudick if a representative product sample is needed.

Shock-Crete SL2 1/8–3/16” (3-5mm)

Shock-Crete SL2 is a self-leveling, slurry-applied flooring system. It provides an excellent alternative to traditional epoxy floor systems.

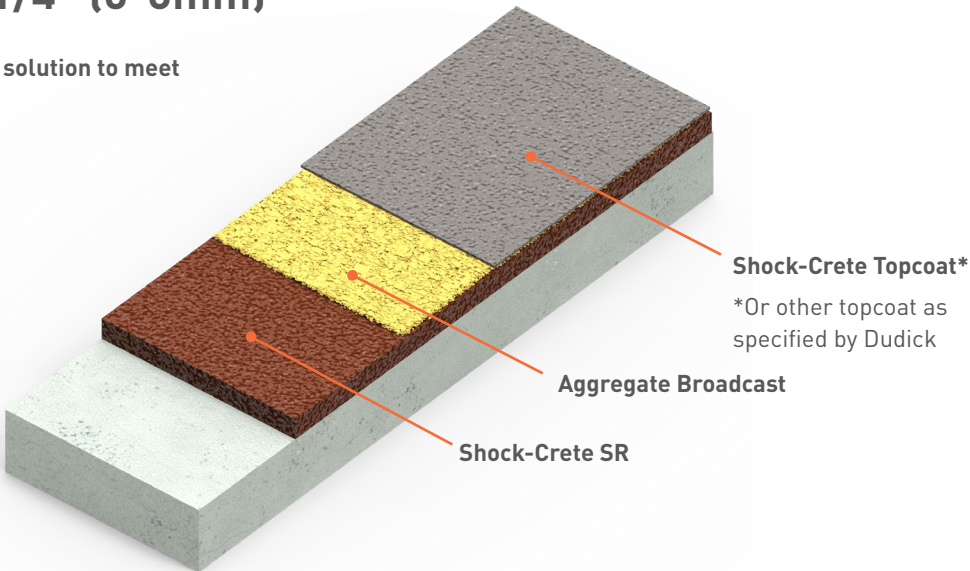
- › Smooth finish; aesthetic appeal
- › MVT resistance up to 12 lb./1,000 sq. ft. per 24 hours
- › Abrasion and chemical resistant
- › 180°F (82°C) – continuous temperature resistance
- › 220°F (104°C) – non-continuous temperature resistance
- › Anti-slip properties
- › Can be use in decorative flake or quartz systems



Shock-Crete SR 3/16–1/4” (5-6mm)

Shock-Crete SR is a slurry-applied flooring solution to meet moderate to heavy-duty service conditions.

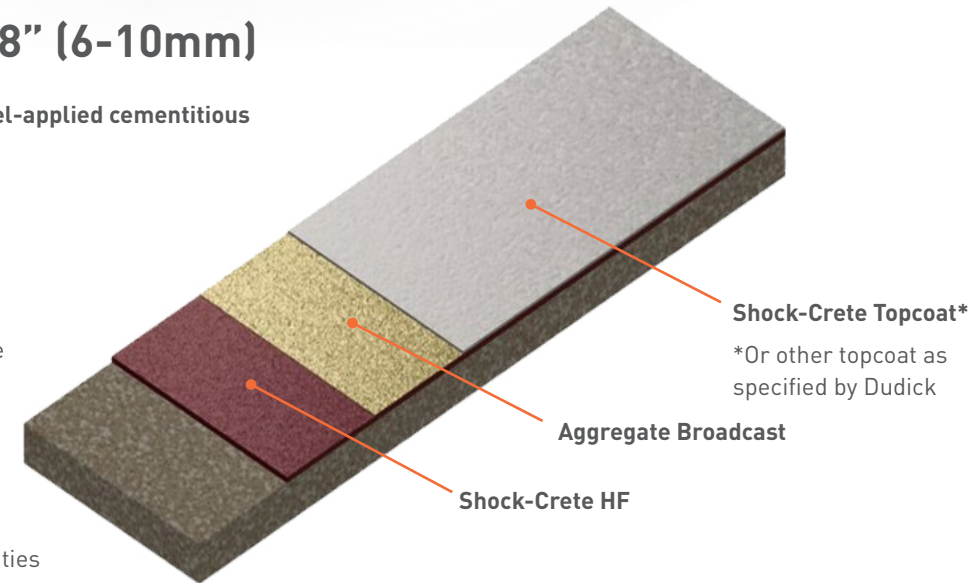
- › Unaffected by MVT
- › Very good abrasion resistance
- › Very good thermal shock resistance
- › 200°F (93°C) – continuous temperature resistance
- › 250°F (121°C) – non-continuous temperature resistance
- › Moderate anti-slip finish
- › Decorative finish options



Shock-Crete HF 1/4–3/8” (6-10mm)

Shock-Crete HF is a highly functional, trowel-applied cementitious urethane flooring mortar.

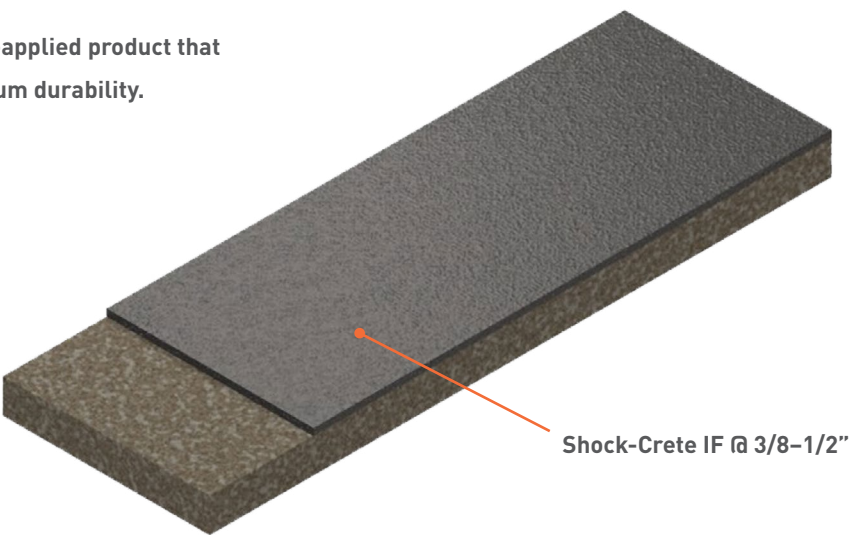
- › Unaffected by MVT
- › High abrasion resistance
- › Resistant to thermal shock
- › 220°F (104°C) – continuous temperature resistance
- › 250°F (121°C) – non-continuous temperature resistance
- › Ultra low VOC/odor
- › Suitable for use in USDA inspected facilities



Shock-Crete IF 3/8-1/2” (10-13mm)

Shock-Crete IF is an exceptionally heavy-duty, trowel-applied product that provides ultimate temperature resistance and maximum durability.

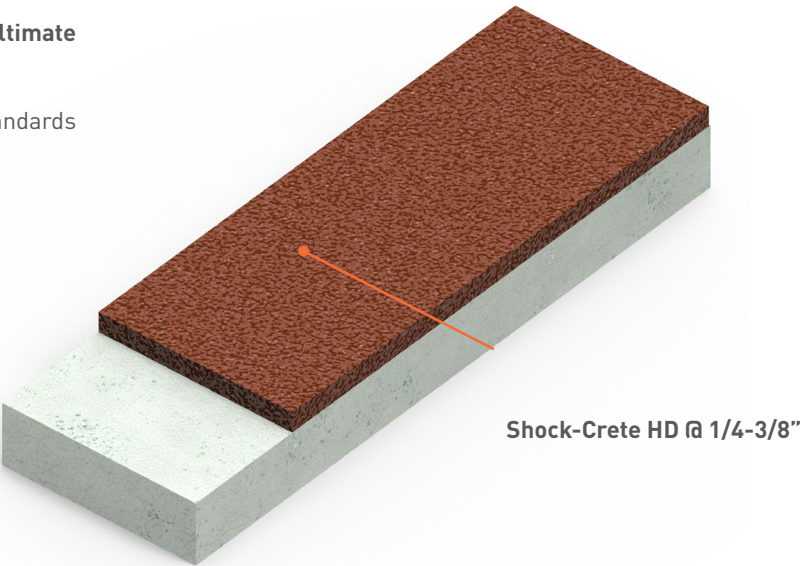
- › Iron-filled for ultra durability
- › Unaffected by MVT
- › Excellent impact resistance
- › Excellent abrasion resistance
- › Excellent thermal shock resistance
- › 220°F (104°C) – continuous temperature resistance
- › 250°F (121°C) – non-continuous temperature resistance
- › Withstands stress from heavy machinery
- › Optional anti-microbial additive inhibits bacterial growth
- › Ultra low VOC/odor
- › Suitable for use in USDA facilities



Shock-Crete HD 1/4–3/8” (6-10mm)

Shock-Crete HD is a trowel-applied product that provides ultimate temperature resistance and maximum durability.

- › Contributes toward LEED 4.1 Low Emitting Materials standards
- › Unaffected by MVT
- › Excellent impact resistance
- › Excellent abrasion resistance
- › Excellent thermal shock resistance
- › 220°F (104°C) – steam cleaning temperature resistance
- › Handles temperature extremes from -350°F to 400°F (-212°C to 204°C)
- › Excellent chemical resistance
- › Coefficient of thermal expansion similar to concrete
- › Optional anti-microbial additive inhibits bacterial growth
- › Resistant to liquid nitrogen (Contact Dudick for recommendations when dealing with liquid nitrogen exposure)



Shock-Crete Topcoat
15-20 mils (381-508 microns)

Polyurethane coating used as a topcoat for cementitious urethane flooring systems. Excellent primer for cementitious urethane systems due to outstanding resistance to moisture vapor transmission. Typical topcoat for Shock-Crete SR and Shock-Crete SL2 flooring systems.

Vapor Stop

10-15 mils (254-381 microns) vertical applications
20-60 mils (508 -1524 microns) horizontal applications

An aggregate-filled polyurethane moisture control system that develops cure strength approximately two times that of the concrete base to which it is applied. The monolithic topping exhibits excellent physical and mechanical strength and moisture vapor reduction.

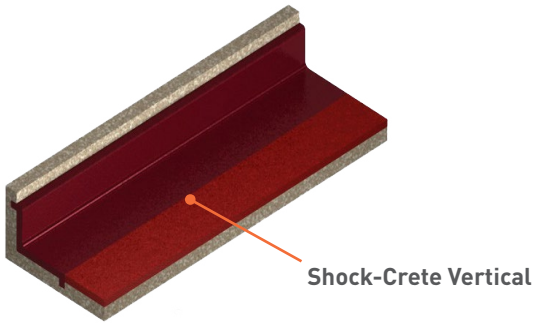
Shock-Crete TCUV
12 mils (300 microns)

Shock-Crete TCUV is a high-performance, UV-stable, semi-gloss topcoat for cementitious urethane floor systems.

Shock-Crete Vertical
1/8-3/16" (3-5mm)

Shock-Crete Vertical provides a highly durable cove base that ensures a seamless, hygienic transition between floor and wall. Shock-Crete Vertical completes your Shock-Crete system to ensure maximum protection against chemicals and bacteria.

- > Contains antimicrobial protection
- > 220°F (104°C) – continuous temperature resistance
- > 250°F (121°C) – non-continuous temperature resistance

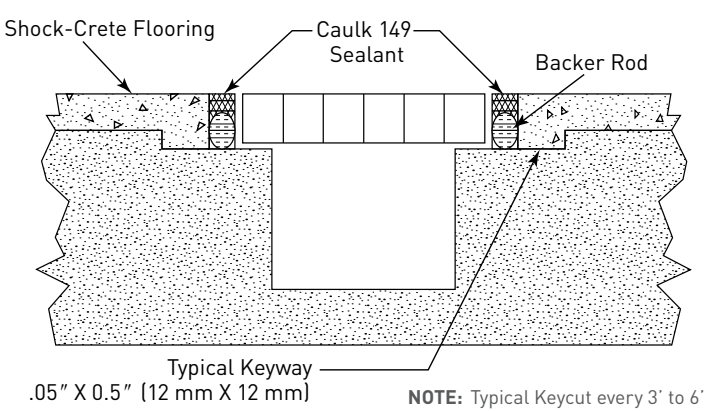


ALTERNATE TOPCOATS	DESCRIPTION	USES
Sealer 70	A fast-cure, polyaspartic coating that imparts excellent UV and chemical protection	Used as a fast-curing, UV-stable sealer or receiving coat for flake and quartz broadcast systems
Steri-Flor™ GP	A high-performance, 100% solids, epoxy floor coating	Used as a receiving and seal coat for decorative broadcast floors
Sealer 30	A high-performance, high-gloss polyurethane finish coat	Used as a UV-resistant, pigmented polyurethane floor sealer for concrete, screeds, or epoxy resin systems

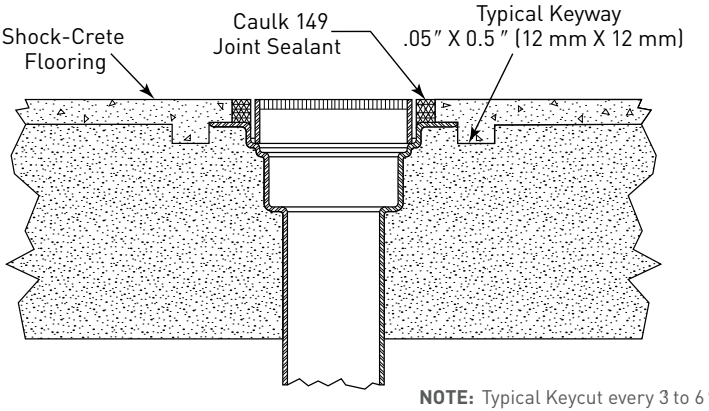
CONCRETE REPAIR	DESCRIPTION	USES
C-Grout	Fast-setting 100% cementitious grout	Used for economical repairs to spalled floors
Carbocrete® 4000	A cement-based, high-performance underlayment (trowel-applied)	A cement-based, high-performance underlayment (trowel-applied)
Caulk PSC	A two-component, very high solids, elastomeric, chemically resistant sealant with the consistency of soft putty.	Used to fill construction joints, protect joint edges, and to seal open joints

Typical Installation and Construction Details

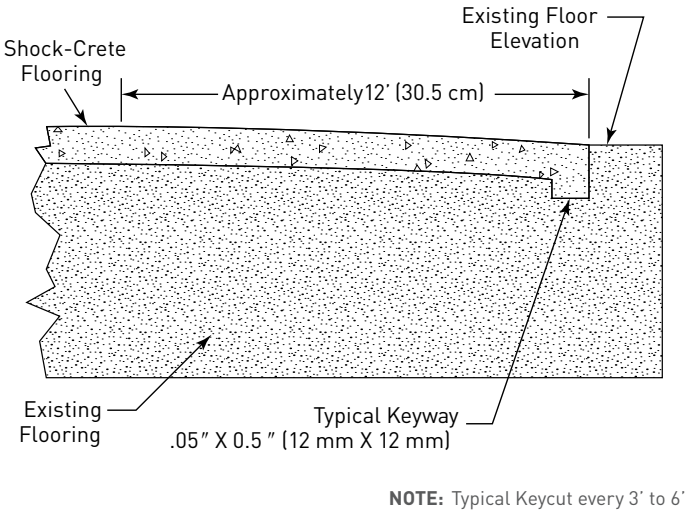
Typical Termination of Stainless Channel Drain



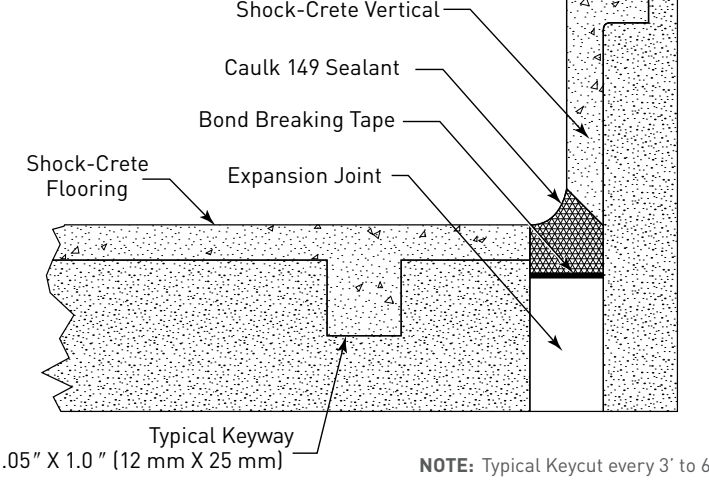
Carbon Steel Floor Drain Cross Section



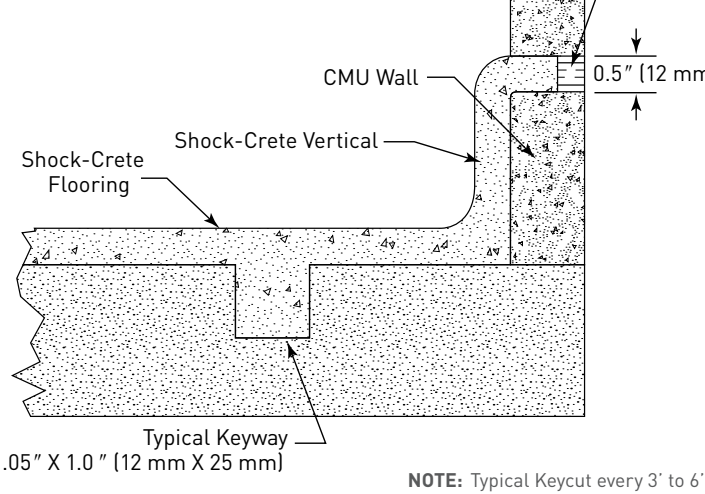
Typical Feathered Edge Termination



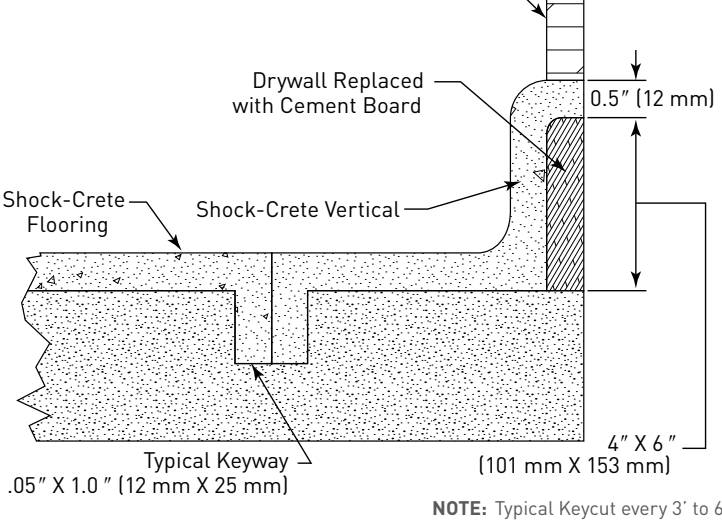
Bottle Cove to Cove with Expansion Joint at Wall



Shock-Crete Tie-In to Block Wall



Tie-In to Drywall



High Performance Seamless Wall and Floor Systems

DUDICK + CARBOLINE

In 2021, Carboline announced the acquisition of Dudick, Inc. Dudick is a world leader in high-performance coatings, flooring, and tank linings headquartered in Streetsboro, Ohio. For over 50 years, Dudick has provided solutions in corrosion resistance and chemical containment systems for food processing, steel production, chemical processing, pulp and paper, electronics, power, and biological research labs.

Dudick will remain a stand-alone brand within Carboline sold by both the existing Dudick team and the global Carboline direct sales team. Dudick customers can expect to receive the same quality products and service they have become accustomed to with Dudick but with the additional benefit of more distribution points and an expanded team to better serve customers. Carboline customers now have access to the high-performance products offered by Dudick.



1818 Miller Parkway
Streetsboro, Ohio 44241
1-800-322-1970
330-562-1970
Fax: 330-562-7638
www.dudick.com
email: sales@dudick.com

The Dudick Difference

Why is the service from Dudick superior to that of other manufacturers?

It's our highly-trained field technicians. Dudick technicians are former applicators with extensive front-line experience working with our products. Quality products, industry leading technical support, all backed by the power of the Carboline brand: that's the Dudick Difference.