



Dudick inc.

Corporate Offices
1818 Miller Parkway
Streetsboro, OH 44241
330-562-1970
330-562-7638 FAX
www.dudick.com

C GROUT

**FAST-SETTING, CEMENTITIOUS
REPAIR GROUT 1/2" MINIMUM
THICKNESS**

FEATURES

One Component - Just Add Water.
Fast Setting.
Shrinkage Compensated.
User Friendly.

RECOMMENDED APPLICATIONS

Pump and Equipment Bases
Concrete Floors and Walls
Concrete Foundations
Leveling Floors
Filling Snap Tie Holes
All Spalled Concrete

CHEMICAL RESISTANCE

C Grout formulations provide superior water proofing properties and are inherently resistant to penetration of most chemicals, oils and salts when compared to Portland Cement. A chemical resistant topcoat will provide extended resistance against concentrated acids, alkalis and oxidizing solutions.

PHYSICAL PROPERTIES

Compressive Strength:	
ASTM C-579	
3 Hours	4,000 PSI
1 Day	7,000 PSI
2 Days	7,400 PSI
Bond Strength:	
ASTM C-882	
1 Day	2,000 PSI
7 Days	3,000 PSI
Linear Length Change:	
ASTM C- 157	
28 Days Wet	0.0%
28 Days Dry	0.0%
Thermal Coefficient of Expansion:	
ASTM C-531	5.0 x 10 ⁻⁶ in./in./°F

Setting Time:

ASTM C-266	
Initial	16 Mins.
Final	28 Mins.

SPECIFICATIONS

C Grout shall be used for concrete and masonry repairs. It shall provide a minimum of 3,000 PSI compressive strength in two hours and a bond strength of 200 PSI. Patching material shall be mixed and installed at 1/2" minimum thickness in accordance with the manufacturer's recommendations.

**ESTIMATING QUANTITIES AND
ORDER BILL OF MATERIAL**

C Grout
.43 cu. ft./50 lb. bag

**Quantities shown are for estimating purposes only. Actual field usage may vary.

APPLICATION INSTRUCTIONS

SURFACE PREPARATION

All grease, oil, dirt, curing compounds, laitance and form release agents must be completely removed from the concrete.

Roughen the surface by chipping, abrasive blasting, or other mechanical means and provide a near vertical face on the edges of existing concrete to insure bond. Loose or broken concrete shall be removed. Surface texture should be similar to 40-60 grit sandpaper **with exposed pea gravel**.

If any existing rebar is exposed and excessive oxidation has taken place, it must be abrasive blasted and coated with a high quality epoxy coating, such as Dudick **Protecto-Coat 325**. (See separate data sheet.)

All surfaces should be thoroughly saturated with water. Excess water shall be removed with clean, compressed air before applying the structural repair material. The substrate must remain damp prior to placement of the **C Grout** to insure maximum adhesion.

INSTALLATION

Carefully read and understand the manufacturer's instructions as printed on the bag. Each bag when properly mixed will yield .43 cu. ft. of material. When extended with 25 lbs. of pea gravel, the yield is up to .64 cu. ft.

Mixing: The mixing operation should be located close to the repair area. A mortar mixer is recommended. For smaller quantities, an electrical drill and paddle mixer is recommended. The mixing order shall be as follows:

1. Clean water shall be placed in the mixer at the rate specified on the bag instructions. **Water content is more critical than with Portland Cement; do not deviate from the rate specified.**

TEMP (°F)	WATER PER 50# BAG (PINTS)	INITIAL SET (MIN)
45°F	5 1/4 Pts.	30
75°F	5 1/2 Pts.	16
95°F	6 1/2 Pts.	15
130°F	7 Pts.	18

2. For large pours, over 2 inches deep, 3/8" clean washed pea gravel should be added to the mix at a rate not to exceed 25 lbs. per 50 lb. bag.

3. Add the **C Grout**. This sequence is important in order to produce a consistent mix and to reduce mixing time. Allow approximately three minutes mixing time.

4. When pouring large volumes of **C Grout**, special consideration should be given to maintaining a continuous flow of material producing a wet leading edge. More than one mixer may be necessary to deliver enough material to insure no cold joints. When cold joints are unavoidable, be sure to wet edges with water before continuing.

PLACING

1. **Horizontal** - Place the mixed material into the prepared area starting from one side of the repair and working to the other side. Do not place the repair materials in lifts. Work the material firmly into the bottom

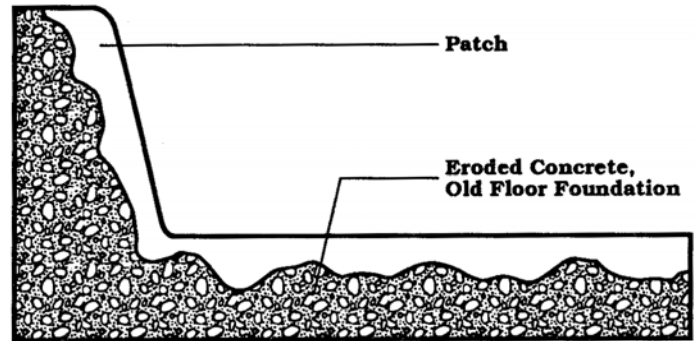
and sides of the repair. Scream the material to the desired level.

Close up edges of the repair with a trowel. Finish the material to the desired texture. Do not swirl or over-trowel. Broom finish if slip resistance is desired.

2. **Vertical** - Using a trowel, move the material in an upward motion against the cutout substrate. Successive applications must be troweled against the previously placed material just prior to set. Build up the material to the thickness desired. Finish the material to the desired texture. **Close up edges of the repair with a trowel; do not swirl or over-trowel.** Vertical application can be improved with the addition of 4 lbs. of **G-1 Powder** per 50 lb. bag of **C-Grout**.

3. Do not re-temper the material. Clean the mixer and tools periodically with water to prevent build up, especially in hot temperatures.

4. In normal temperatures (75°F) allow 15-20 minutes to mix, place, and finish the **C Grout**.



CLEANING

Clean tools and equipment with water.

SHIPPING

C Grout can be shipped by any common carrier. It is packaged in bags weighing 50 lbs. and is handled in accordance with the American Concrete Institute for concrete and concrete products.

STORAGE

C Grout ingredients are indefinitely stable when stored in a cool, dry area. Containers should be carefully resealed after use.



Dudick inc.

Corporate Offices
1818 Miller Parkway
Streetsboro, OH 44241
330-562-1970
330-562-7638 FAX
www.dudick.com

C GROUT

**FAST-SETTING, CEMENTITIOUS
REPAIR GROUT 1/2" MINIMUM
THICKNESS**

SAFETY

M.S.D.S.: Material Safety Data Sheets must always be read before using products. All personnel who will be working with C Grout should be aware of and strictly observe the following safety precautions.

- Safety glasses, gloves and suitable protective clothing must be worn at all times.
- A suitable dust mask or respirator should be worn during the mixing operation.

Caution: Causes skin irritation - injurious to eyes. Contains Portland Cement or other caustic material which may cause skin injury. Avoid contact with skin where possible and wash exposed areas promptly with water. In case of eye contact, rinse immediately and repeatedly with water for 15 minutes and get prompt medical attention. Refer to product MSDS before use.

NOTE: Dudick, Inc. ("Dudick") warrants all goods of its manufacture to be as represented in its catalogs and that the manufacture of its products by its employees or sub-contractors shall be performed in a workmanlike manner. Dudick's sole obligation under this warranty shall be to replace any material which its examination shall disclose to be defective. Dudick makes no warranty concerning the suitability of its product for application to any surface, it being understood that the goods have been selected and the application ordered by the Purchaser. DUDICK, INC. MAKES NO WARRANTY, EXPRESS OR IMPLIED, THAT THE GOODS SHALL BE MERCHANTABLE OR THAT THE GOODS ARE FIT FOR ANY PARTICULAR PURPOSE. THE WARRANTY OF REPAIR OR REPLACEMENT SET FORTH HEREIN IS EXCLUSIVE AND IN LIEU OF ALL OTHER WARRANTIES ARISING BY LAW OR OTHERWISE; AND DUDICK INC. SHALL NOT BE LIABLE FOR INCIDENTAL OR CONSEQUENTIAL DAMAGES, INCLUDING BUT NOT LIMITED TO LOST PROFITS, DOWN TIME, DAMAGES TO PROPERTY OF THE

PURCHASER OR OTHER PERSONS, OR DAMAGES FOR WHICH THE PURCHASER MAY BE LIABLE TO OTHER PERSONS, WHETHER OR NOT OCCASIONED BY DUDICK'S NEGLIGENCE. This warranty shall not be extended, altered or varied except by written instrument signed by Dudick and Purchaser.

4/6/15